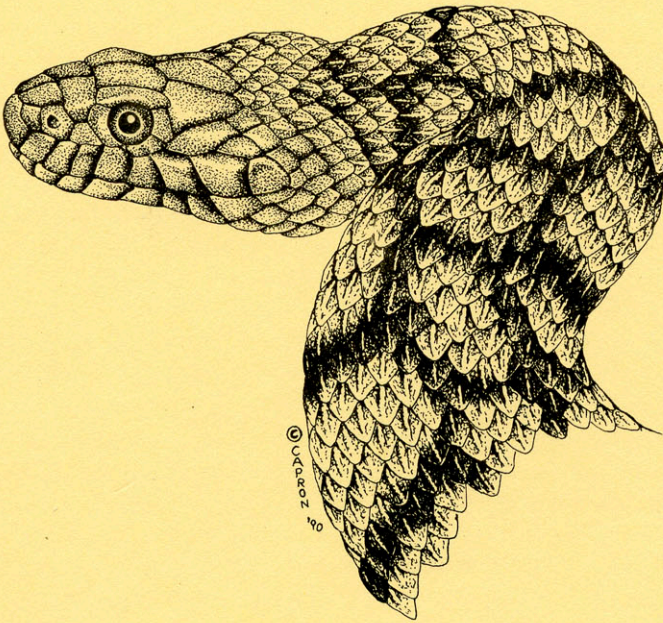


LONGEVITY OF
REPTILES AND AMPHIBIANS IN NORTH
AMERICAN COLLECTIONS

Second Edition

ANDREW T. SNIDER AND J. KEVIN BOWLER



Society for the Study of Amphibians and Reptiles

	Sex	Y	M	D	Origin	Cont
<i>Grayia smithi</i>	0.1	1	8	8	unk	NZP
<i>Helicops schistosus</i>	0.0.1	12	3	17	w-adult	PZ
<i>Heterodon nasicus gloydi*</i>	1.0	10	7	7	cb	LAZ
<i>Heterodon nasicus kenneerlyi</i>	0.0.1	9	2	7	w-adult	LP
<i>Heterodon nasicus nasicus*</i>	1.0	19	10	28	w-adult	OCZ
<i>Heterodon platirhinos</i>	1.0	7	8	15	cb	ZA
<i>Heterodon simus*</i>	0.0.1	3	0	28	w-juv	JB
<i>Hydrodynastes gigas</i>	0.1	16	10	2	w-adult	PZ
<i>Hypsiglena torquata ochrorhyncha</i>	1.0	6	6	2	w-adult	ZA
<i>Hypsiglena torquata texana</i>	0.0.1	9	3	0	w-adult	LPZ
<i>Hypsiglena torquata tiburonensis</i>	0.0.1	3	3	0	w-adult	SLA
<i>Lampropeltis alterna</i>	1.0	15	2	0	w-adult	WPZ
<i>Lampropeltis calligaster calligaster</i>	1.0	23	8	23	w-adult	OCZ
<i>Lampropeltis calligaster rhombomaculatus*</i>	1.0	14	11	13	w-adult	ZA
<i>Lampropeltis getula californiae*</i>	1.0	33	4	0	w-juv	CD
<i>Lampropeltis getula floridana</i>	1.0	20	2	27	w-adult	LAZ
<i>Lampropeltis getula getula*</i>	1.0	21	9	0	w-juv	NF
<i>Lampropeltis getula holbrookii</i>	1.0	14	5	22	w-adult	SLZ
<i>Lampropeltis getula nigra</i>	1.0	13	5	17	w-adult	FWZ
<i>Lampropeltis getula nigrata</i>	1.0	15	2	2	w-adult	CZ
<i>Lampropeltis getula splendida</i>	0.1	12	10	29	w-juv	AMNH
<i>Lampropeltis getula yumensis</i>	0.0.1	23	3	0	w-juv	WHW
<i>Lampropeltis infralabialis</i>	0.0.1	4	5	10	w-adult	TBZ
<i>Lampropeltis multifasciata</i>	0.0.1	28	9	0	w-juv	GS
<i>Lampropeltis parvirubra</i>	0.0.1	11	11	25	w-adult	SA
<i>Lampropeltis pyromelana pyromelana</i>	1.0	22	5	10	unk	PitZ
<i>Lampropeltis pyromelana woodini</i>	0.0.1	19	0	4	w-juv	TP
<i>Lampropeltis triangulum amaura</i>	0.0.1	20	7	0	w-unk	GPM
<i>Lampropeltis triangulum annulata</i>	0.0.1	20	2	0	w-adult	DH
<i>Lampropeltis triangulum arcifera*</i>	1.0	16	0	0	w-juv	ZA
<i>Lampropeltis triangulum caelenops*</i>	1.0	10	11	13	w-juv	BA
<i>Lampropeltis triangulum campbelli*</i>	0.1	6	10	27	w-unk	HZ
<i>Lampropeltis triangulum elapsoides</i>	0.0.1	16	0	10	w-adult	BdZ
<i>Lampropeltis triangulum gentilis</i>	0.0.1	10	5	20	unk	NZP
<i>Lampropeltis triangulum hondurensis*</i>	1.0	15	5	16	cb	OCZ
<i>Lampropeltis triangulum nelsoni*</i>	0.1	16	9	0	cb	TomT
<i>Lampropeltis triangulum polyzona</i>	0.1	20	4	24	w-adult	LAZ
<i>Lampropeltis triangulum sinaloae*</i>	0.1	14	11	30	w-adult	WPZ
<i>Lampropeltis triangulum stuarti*</i>	1.0	13	2	6	w-juv	DHe
<i>Lampropeltis triangulum sypila</i>	1.0	16	6	19	w-adult	LAZ
<i>Lampropeltis triangulum triangulum</i>	0.1	21	4	14	w-adult	PZ
<i>Lampropeltis zonata multicincta</i>	0.1	19	6	4	unk	PitZ
<i>Lampropeltis zonata zonata</i>	0.0.1	26	4	1	unk	PitZ