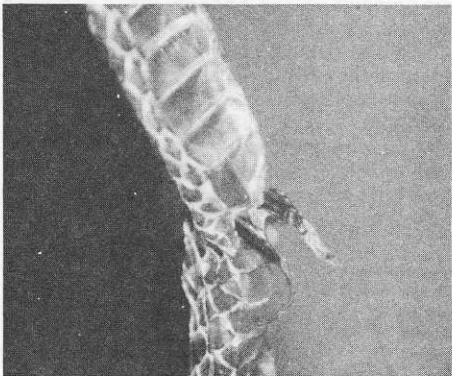


tonio of Gainesville, Florida inspected the skin and suggested that the two attachments could be from the anal glands, but this he had also never previously observed. The molted skin was destroyed by ants before other observations could be made to more completely describe these structures. Photographs were made of the shed before its loss (Figure 1).

Submitted by **MICHAEL W. HAMMOCK**, Rt. #1, Wallace Road, Luttrell, Tennessee 37779 and **GORDON M. BURGHARDT**, Departments of Psychology and Zoology, University of Tennessee, Knoxville, Tennessee 37996, U.S.A. ●

**LAMPROPELTIS ALTERNA** (Gray-banded Kingsnake). **AN UNUSUAL SLOUGH.** On 10 July 1983, a captive-born and raised male *Lampropeltis alterna* (864 mm total length, 22 months old) shed his skin after a normal opaque cycle. While removing the freshly molted skin from this animal's enclosure and inspecting the shed, one of us (MWH) observed that the shed skin had attached to it what looked like replicas of both the snake's hemipenes. The hemipenis "copies" were firmly attached to the vent and were in the normal position for these organs. While the molted skin was still moist the replicas were pliable. The base of each measured approximately 3 mm in girth and tapered out to a pointed end 16 mm long with no barbs or other visible protrusions. After several days of drying, the two replicas decreased in circumference and in length and were 10 mm for the left and 13 mm for the right. The total length of the dry molted skin was 914 mm. After observing hundreds of molted skins over the years we have never before seen a molted skin with abnormal attachments such as these, nor have we read any literature reporting such an occurrence. Fred B. An-



**Figure 1.** The everted hemipenial coverings on the shed skin of a male *Lampropeltis alterna*.